

Athens Symphony Viola Auditions

Beethoven - Symphony No. 5, Mvt. II, 1-9, and 28-37

Mozart - Symphony No. 35, Mvt. 4, 1-32

Grieg - Peer Gynt, Mvt. 1, Rehearsal B

Auditions will be on Monday, August 29th, at 6:45 pm in Ligotti Hall in the Classic Center. Auditions will be with myself and other leaders from the symphony.

This list includes works that showcase your range, lyrical ideas, and technical facilities. Knowing the score and listening to recordings will be your best guide to this and any other audition material.

Suggested Preparation:

Listen to suggested recordings – focus on tempo and style

Work slowly – remember that practice makes permanent

Prepare the entire list – you will play a substantial portion

RECORD – LISTEN – ADJUST – REPEAT

As always, the pillars of a winning performance are:

Beautiful and Consistent Tone

Excellent Pitch

Impeccable Time

Musicality and Versatility.

Remember, we **want** you to play your very best and with the confidence that only comes through solid preparation. Good luck, and I look forward to hearing you!

Beethoven — Symphony No. 5

Viola

390 *ff* *f*

407

421 *f*

435 *F* *2* *2* *2*

452 *F* *1* *1*

468 *ff* *5*

488 *ff*

Andante con moto $\text{♩} = 92$

p dolce

8 *p* *f* *p* *Viol. II* *p* *cresc.* *f* *p*

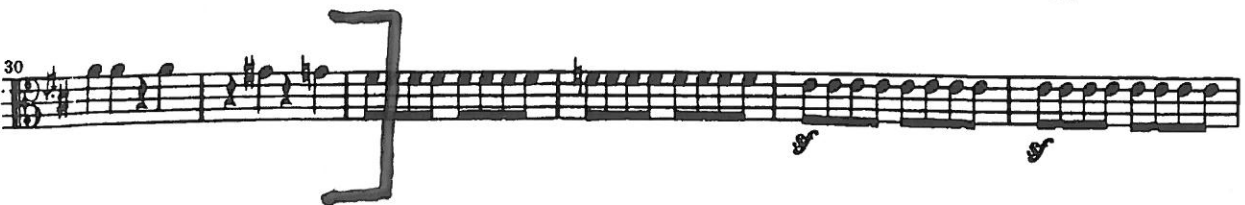
23 *pp* *ff* *A*

31 *sempre ff* *ff* *ff*

37 *pp* *sempre p* *cresc. f* *f* *p dolce*

51 *f* *p* *cresc.* *f*

Viola



[illegible]

B Un poco Allegro.

Viola Solo.

Musical notation for the bass line of 'The Rose Tree'. The key signature is one sharp (F#). The melody consists of eighth and sixteenth notes, with some measures containing beamed sixteenth notes. The piece ends with a double bar line and a common time signature 'C'.